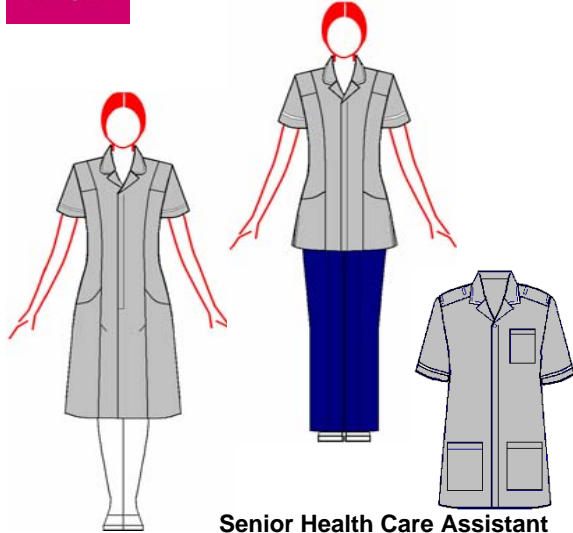




Northern Lincolnshire and Goole Hospitals

Dress Style: N311 Tunic (F): P356

Tunic (M): M675 – Rever Collar or M559 Dental Style

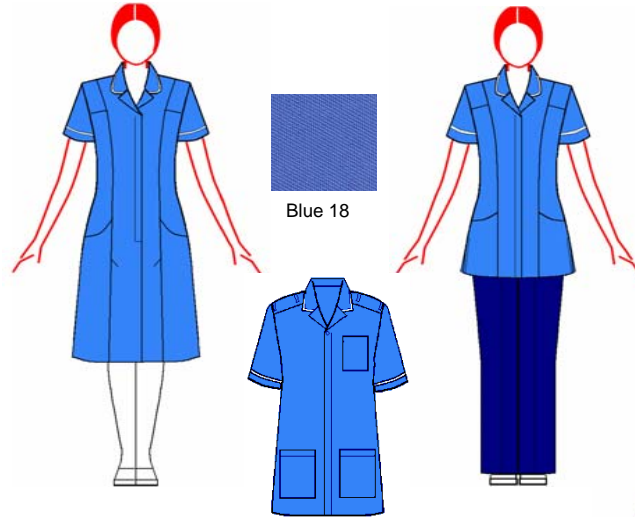


Senior Health Care Assistant

Smoke grey with white trim



Smoke grey

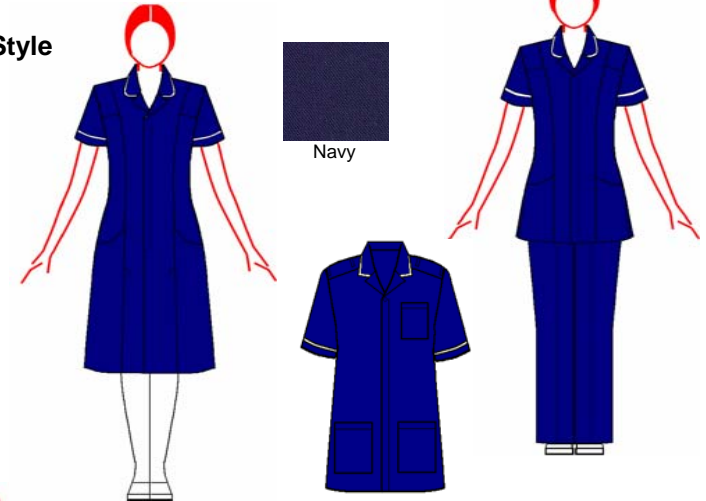


Registered Nurse/ midwife

Blue 18 with white trim



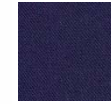
Blue 18



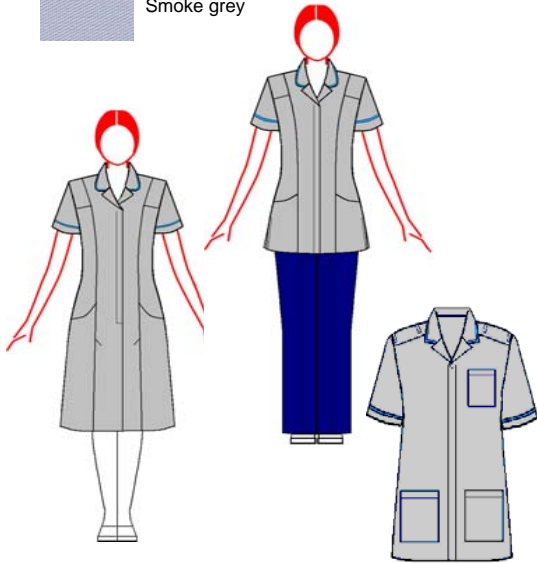
Ward Manager Site Co-ordinators

Midwife Co-ordinator

Navy with white trim



Navy



Advanced Health Care Assistant

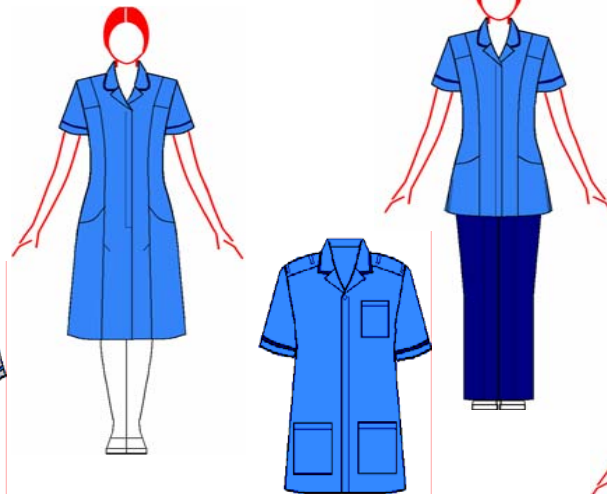
Smoke grey with blue 18 trim



Smoke grey



Blue 18



Deputy Ward Manager Sister

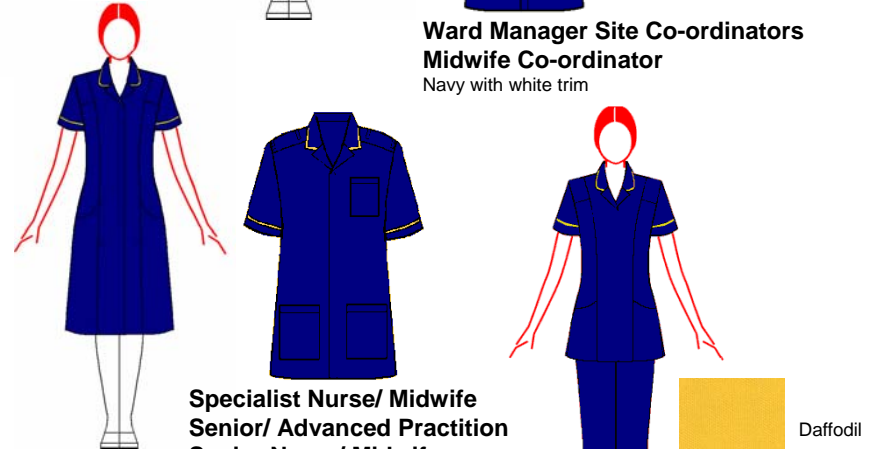
Blue 18 with navy trim



Navy



Blue 18



Specialist Nurse/ Midwife
Senior/ Advanced Practitioner
Senior Nurse/ Midwife

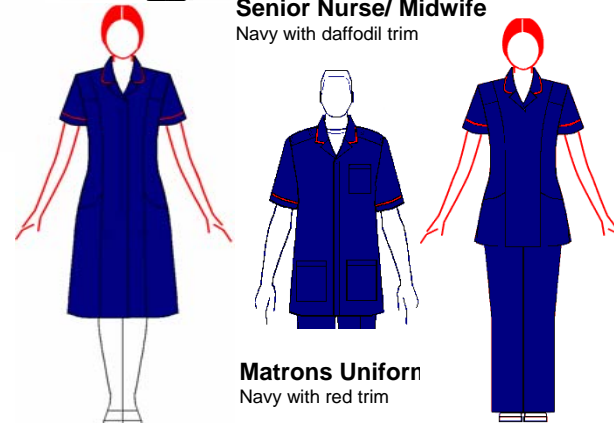
Navy with daffodil trim



Daffodil



Navy



Matrons Uniform

Navy with red trim

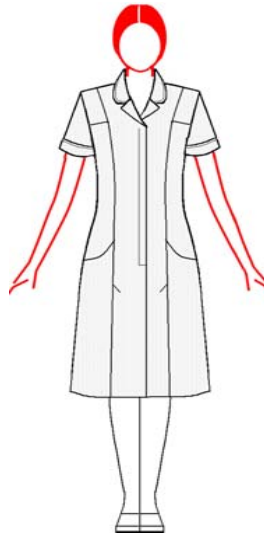


Navy

Red

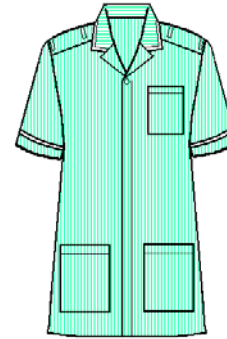
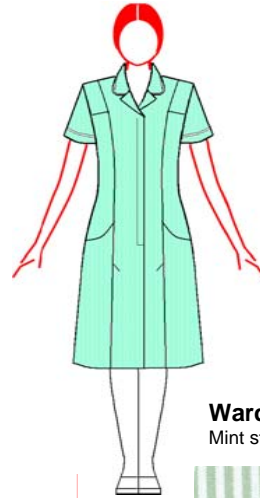


Northern Lincolnshire and Goole Hospitals



Grey stripe

Ward Support Workers
Grey stripe with white trim



Mint stripe

Ward Clerks
Mint stripe with white trim



Trainee Health Care Assistant
White with white trim



Play Specialist/ Nursery Nurse



Animals



Bugs



Doctors & Nurses



Jade playtime



perfect pets



perfect pets



Patients

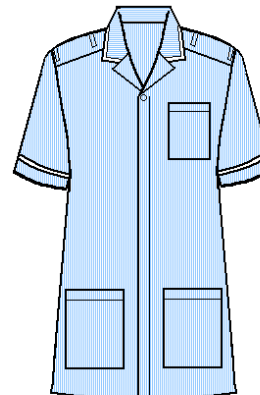
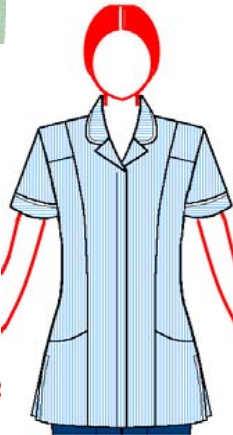
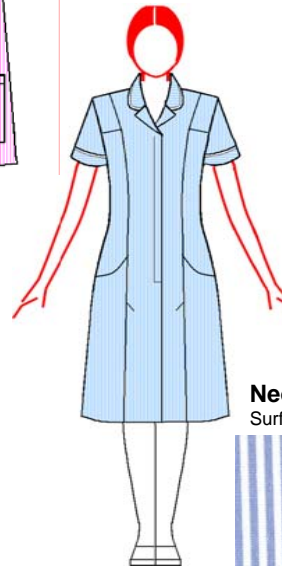


Patients



Lilac stripe

House- Keeper
Lilac stripe with white trim

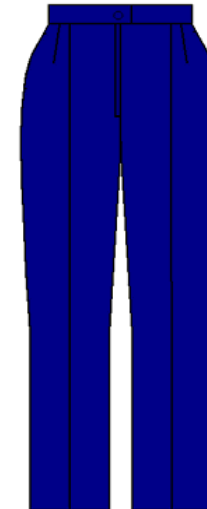


Surf blue stripe

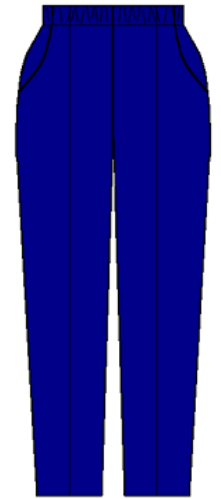
Neonatal Nursery Nurse
Surf blue stripe with white trim



Navy



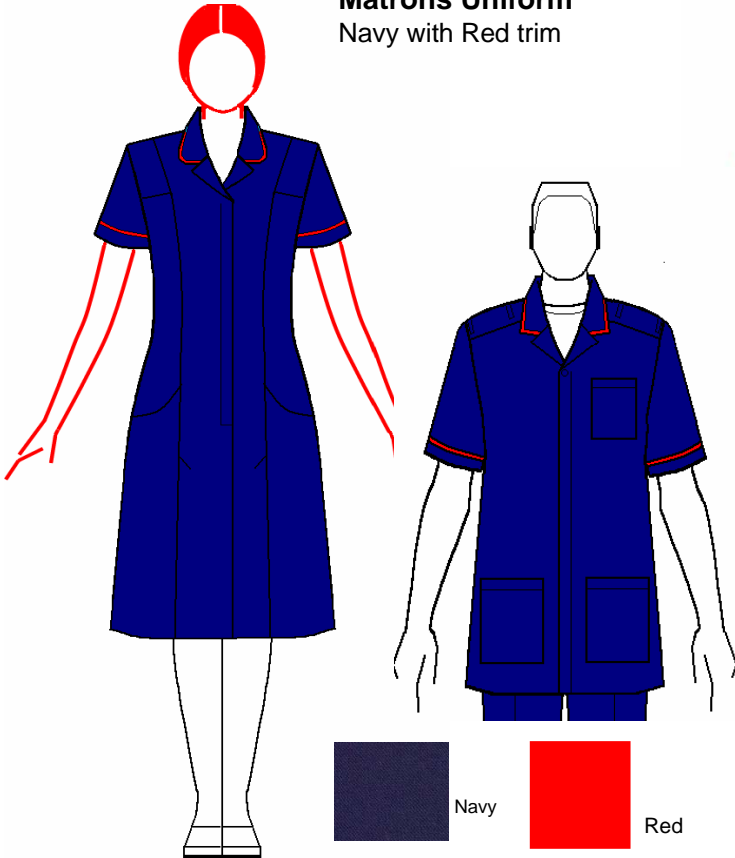
T1852
Female



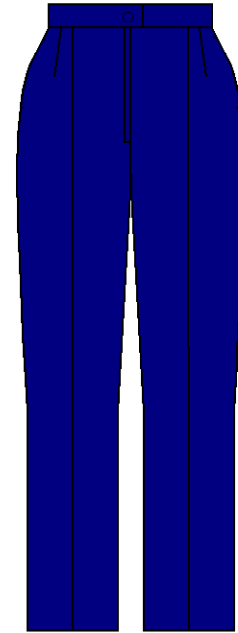
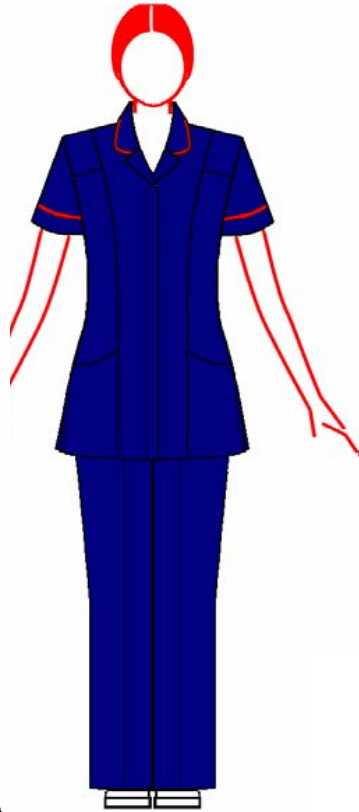
T2045
Male

Dress: N311
Tunic (F): P356
Tunic (M): M675

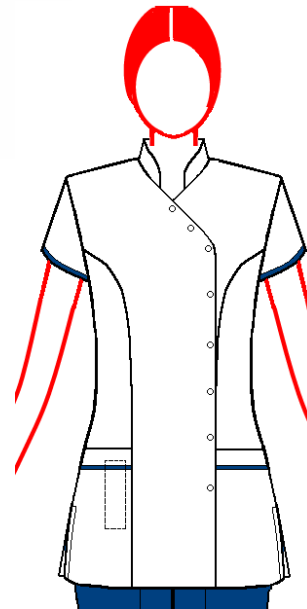
Matrons Uniform
Navy with Red trim



Dress: N311
Tunic (F): P356
Tunic (M): M675 Rever Collar or M559 Dental Style



Tunic (F): P785
Trousers (F): 1852
Tunic (M): M559 Dental style
Trouser (M): T2045



Hostess Uniforms
White with navy trim

