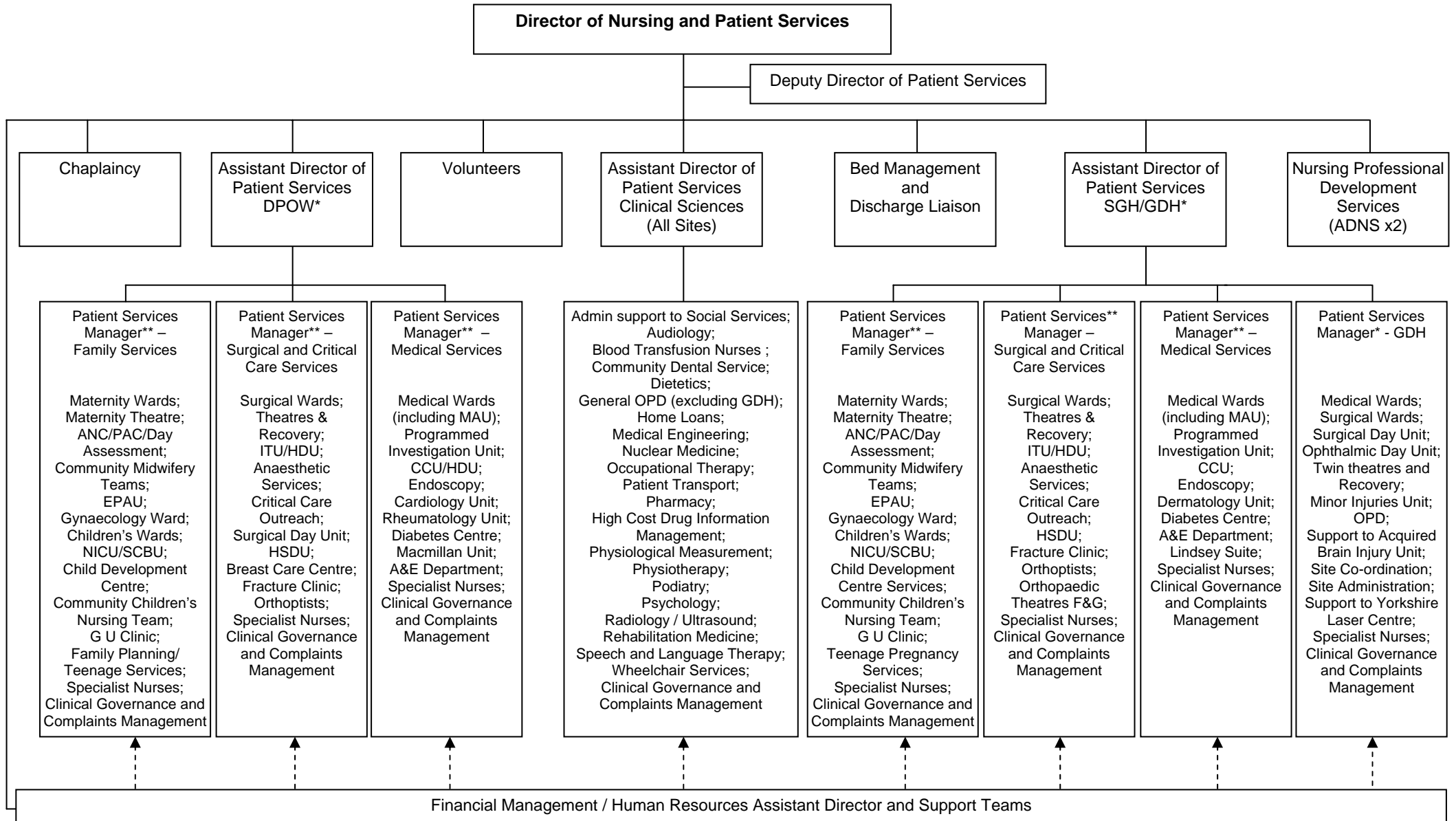


Northern Lincolnshire and Goole Hospitals

NHS Foundation Trust

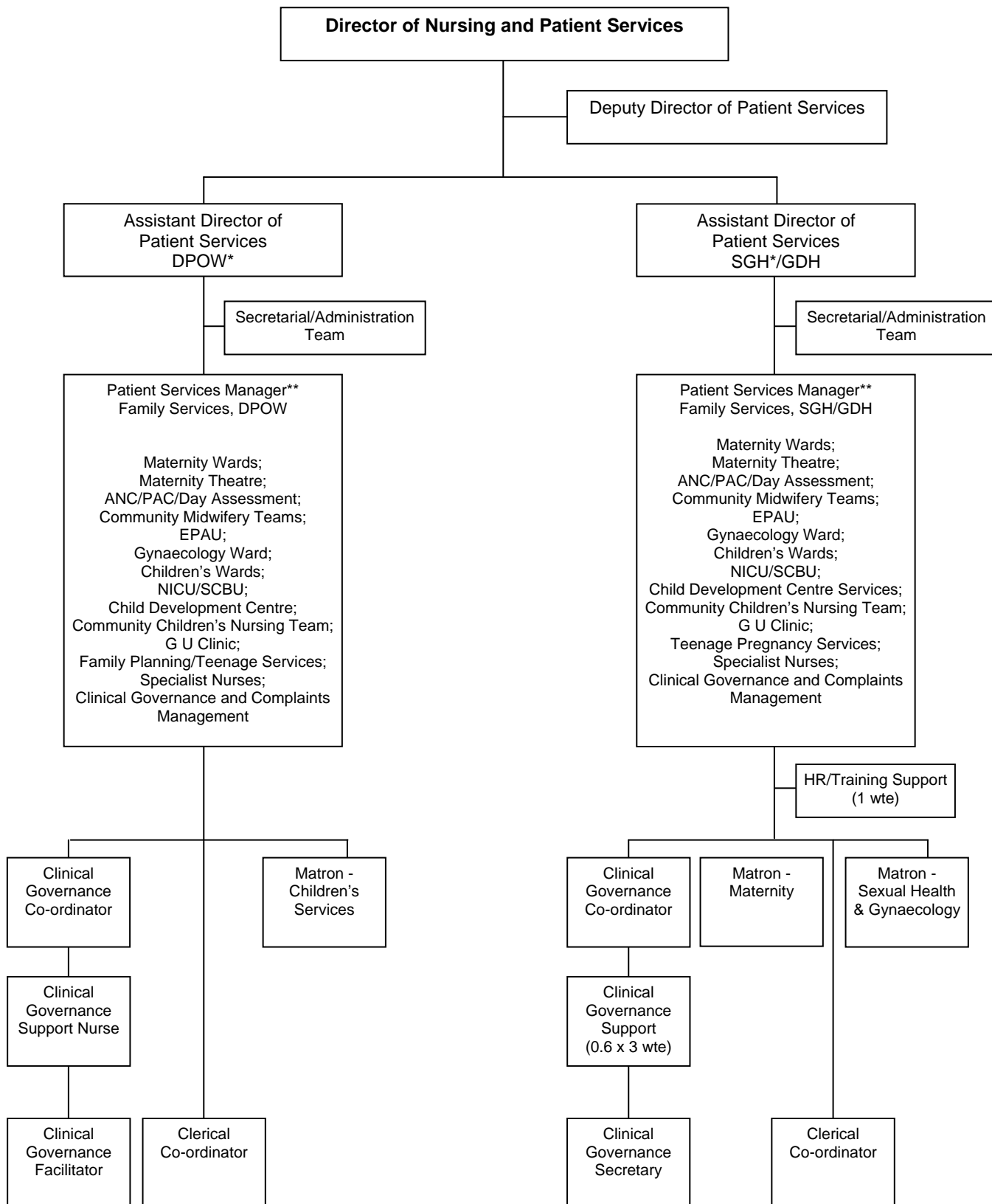
* The Assistant Directors will act as site managers for the DGH site upon which they are based. At GDH the Patient Services Manager will act as site co-ordinator.

** It is anticipated that within each branch of Patient Services, one Patient Services Manager will be designated as Head of Nursing/Midwifery for that branch across the Trust. Within the Family Services branch this will include both a Head of Midwifery and Head of Children's Nursing. Typically, the other Patient Services Manager will be the Head of Governance for that branch across the Trust. These designations will be included in the job title.



Northern Lincolnshire and Goole Hospitals

NHS Foundation Trust

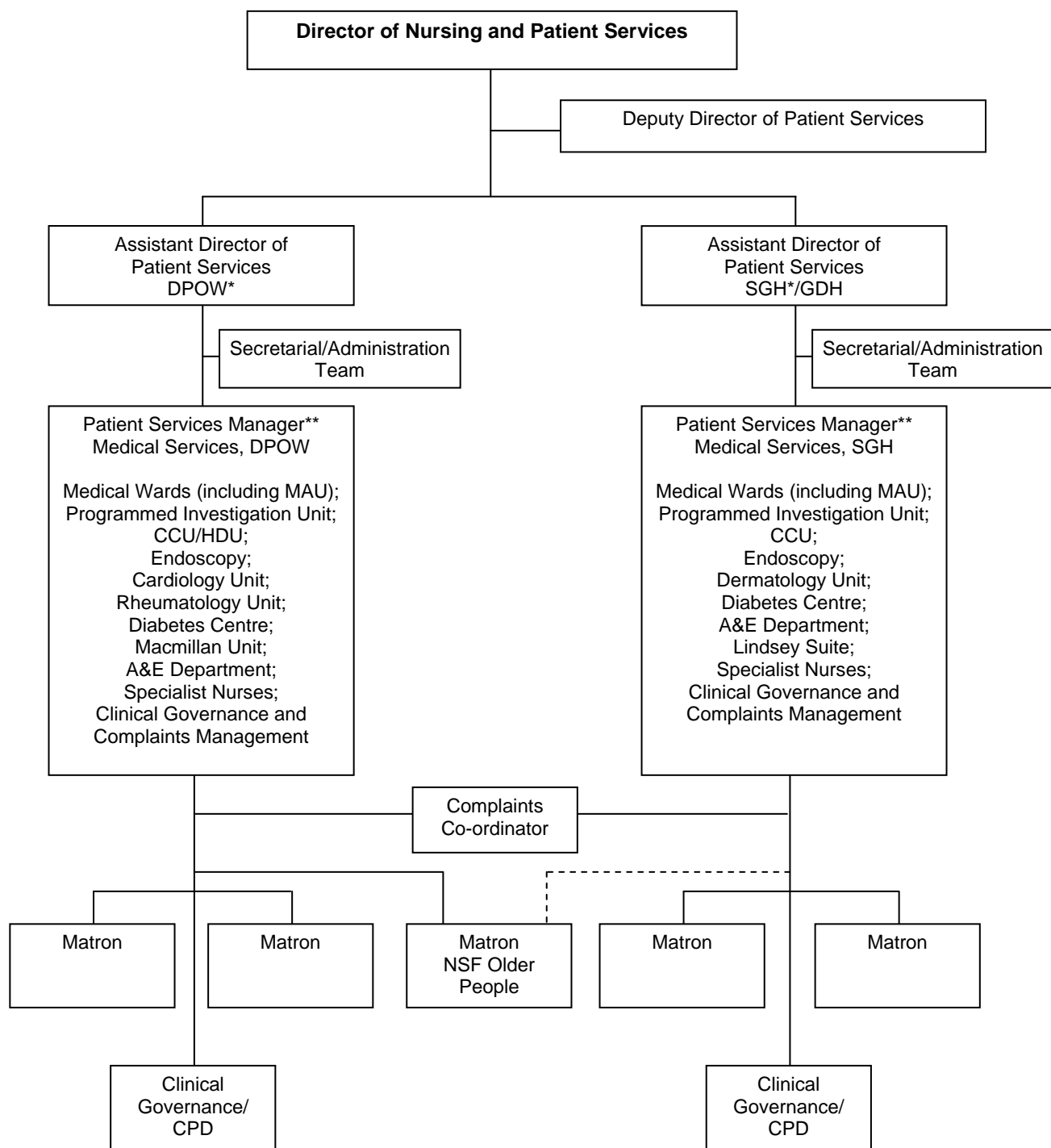


* The Assistant Directors will act as site managers for the DGH site upon which they are based. At GDH the Patient Services Manager will act as site co-ordinator.

** It is anticipated that within each branch of Patient Services, one Patient Services Manager will be designated as Head of Nursing/Midwifery for that branch across the Trust. Within the Family Services branch this will include both a Head of Midwifery and Head of Children's Nursing. These designations will appear in the job title. Each will also carry responsibility for governance in their sphere of clinical service delivery.

Northern Lincolnshire and Goole Hospitals

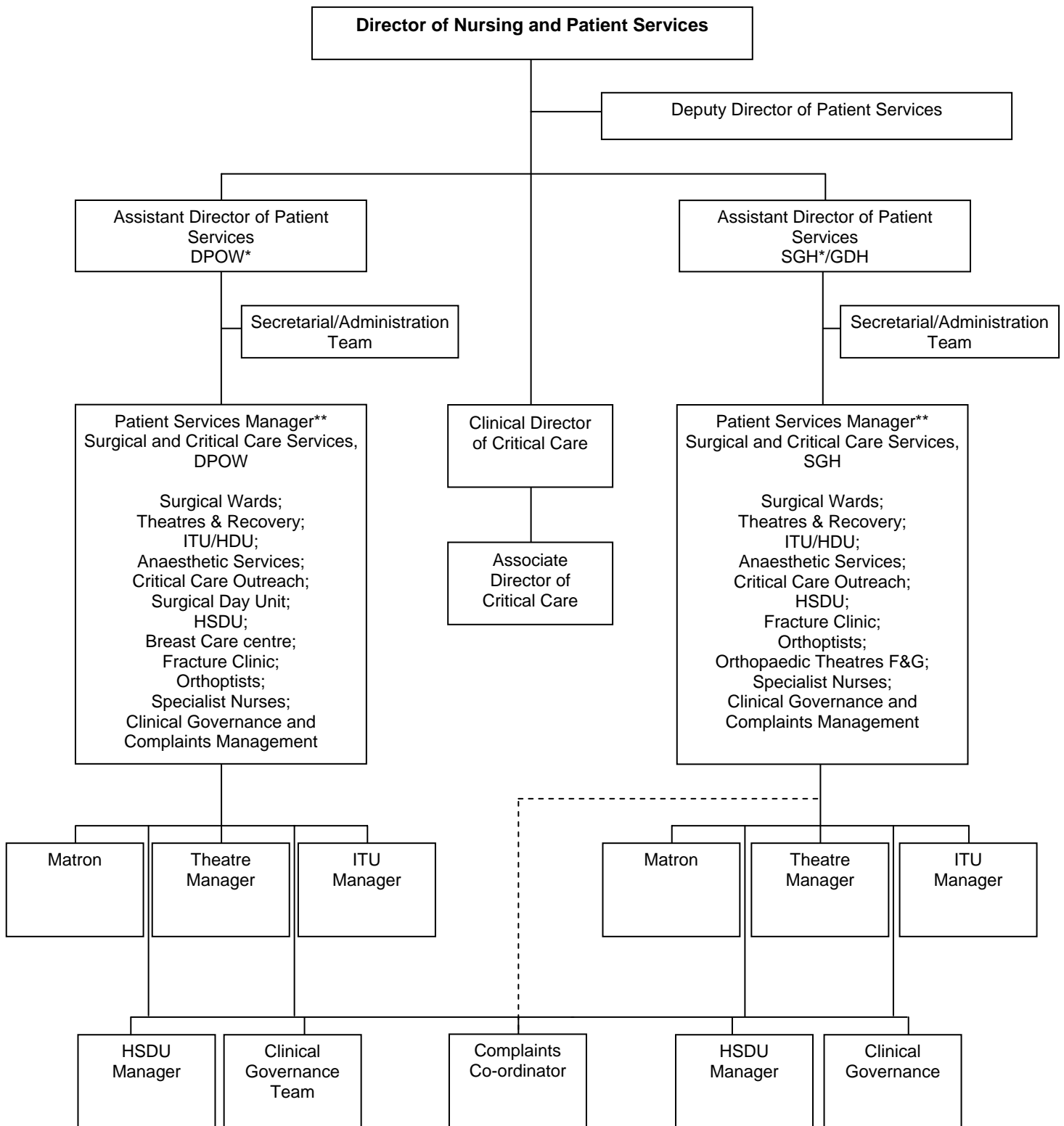
NHS Foundation Trust



* The Assistant Directors will act as site managers for the DGH site upon which they are based. At GDH the Patient Services Manager will act as site co-ordinator.
 ** It is anticipated that within each branch of Patient Services, one Patient Services Manager will be designated as Head of Nursing for that branch, and another the Head of Governance. These designations will appear in the job title.

Northern Lincolnshire and Goole Hospitals

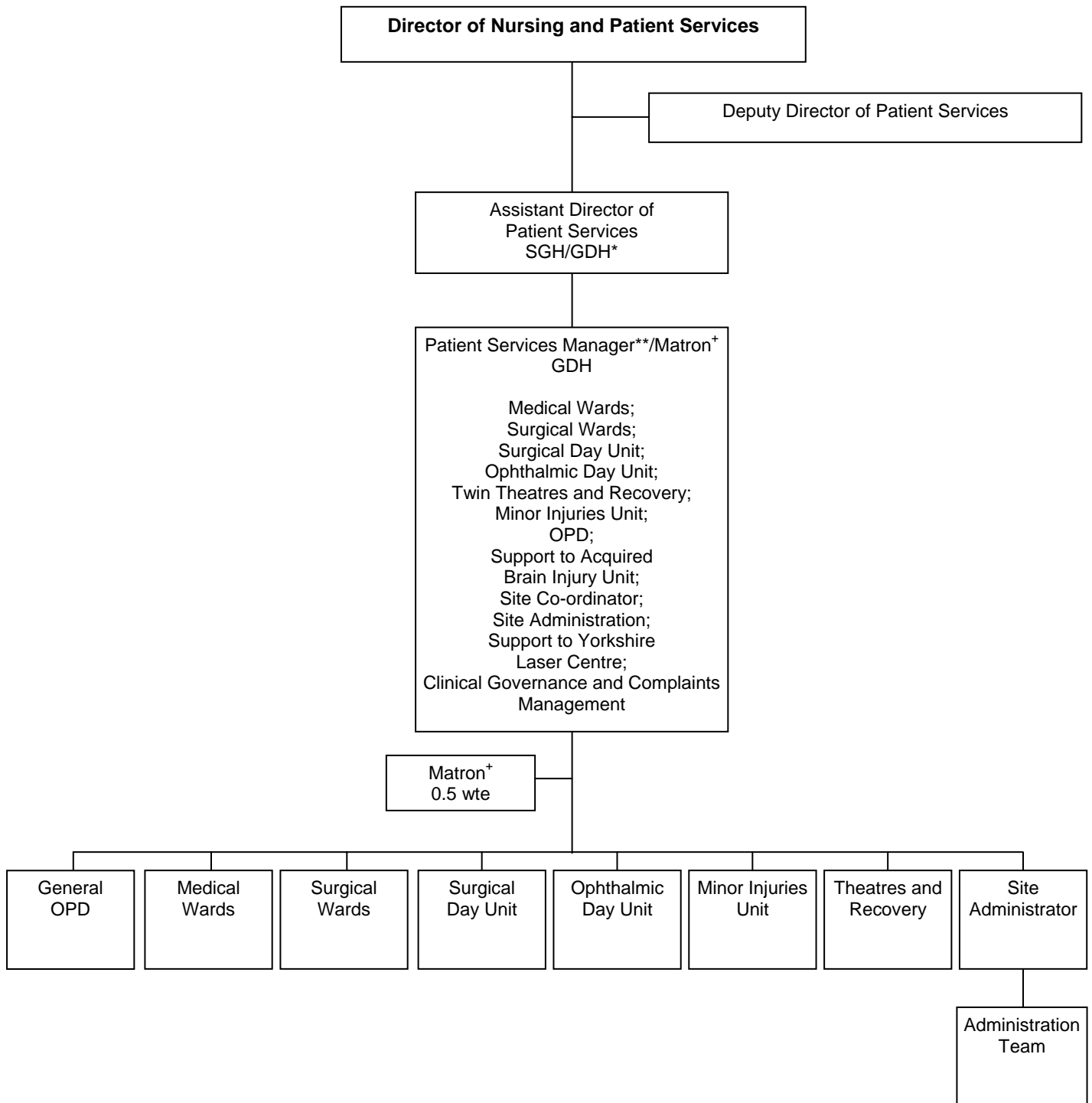
NHS Foundation Trust



* The Assistant Directors will act as site managers for the DGH site upon which they are based. At GDH the Patient Services Manager will act as site co-ordinator.
 ** It is anticipated that within each branch of Patient Services, one Patient Services Manager will be designated as Head of Nursing for that branch, and another the Head of Governance. These designations will appear in the job title.

Northern Lincolnshire and Goole Hospitals

NHS Foundation Trust



* The Assistant Directors will act as site managers for the DGH site upon which they are based. At GDH the Patient Services Manager will act as site co-ordinator.

** It is anticipated that within each branch of Patient Services, one Patient Services Manager will be designated as Head of Nursing for that branch, and another the Head of Governance. These designations will appear in the job title.

+ Within this structure one Matron will be responsible for surgical services, and the other for medical services (including OPD). Once the focus of responsibility of each post holder has been established, ward/departmental manager lines of accountability will be amended to show medical wards/departments to the Matron for medical services (including OPD), and surgical wards/departments to the Matron for surgical services.