

# Children’s Speech and Language Therapy in North Lincolnshire – Our School Age Service



Name:

---

Who to contact and how:

---

Notes:

---

---

---

---

Diana, Princess of Wales  
Hospital  
Scarcho Road  
Grimsby  
DN33 2BA

03033 306999

[www.nlg.nhs.uk](http://www.nlg.nhs.uk)

Scunthorpe General  
Hospital  
Cliff Gardens  
Scunthorpe  
DN15 7BH

03033 306999

[www.nlg.nhs.uk](http://www.nlg.nhs.uk)

Goole & District  
Hospital  
Woodland Avenue  
Goole  
DN14 6RX

03033 306999

[www.nlg.nhs.uk](http://www.nlg.nhs.uk)



**Kindness · Courage · Respect**

## Who is the service for?

Children in North Lincolnshire can access our service in their school. This includes both our mainstream and special schools. Children with fluency (stammering), cleft related difficulties or feeding and swallowing difficulties may be offered community appointments.

Children can access the mainstream schools service from the time they start reception class.

Children with Education Health and Care Plans (EHCPs) or who are attending a special school can access the service from the time they start nursery class.

The service is for children who have Speech, Language and Communication Needs (SLCN) or a feeding and swallowing difficulty. Children can be referred to the school age service by their school or professionals working with them (e.g. GPs and hospital consultants). Parents can also request a referral. If you are unsure you can contact us to talk about your concerns before making a referral. Further guidance about making a referral is available in the North Lincolnshire Referral guidance for School Age Children document. Please see **Appendix 1**.

Please note we are only commissioned to see children who are registered with a North Lincolnshire GP. Children who live or attend school outside our area, but who have a North Lincolnshire GP, will be offered clinic based appointments.

## What to expect?

We aim to offer all children an initial assessment with a registered Speech and Language Therapist within four weeks of referral. Following that initial assessment we will work with you and school staff to agree a plan of care for your child. We will provide a written care plan to home and school.

Your child will be discharged if they do not currently require speech and language therapy intervention.

## Children May Require Speech and Language Therapy if:

1. They are not meeting speech and language milestones for their age / developmental level
2. They are stammering
3. They are experiencing barriers to communication that are impacting on interaction with other children and / or adults
4. They have difficulties with eating and drinking
5. There are signs of 'Selective Mutism' e.g. not talking at school or nursery after 6 months of attending. Please see the Selective Mutism Top Tips leaflet [www.northlincslocaloffer.com](http://www.northlincslocaloffer.com)

# Information for patients

## You Don't Need to be Seen by a Speech and Language Therapist if:

1. Your child is learning English as an additional language and your child is developing normally in their first language
2. Your child's difficulties are due to limited attention and listening skills or behaviour difficulties
3. If your child has a known condition or syndrome e.g. Downs Syndrome, Autism, but does not have specific speech and language difficulties
4. If your child has limited food preferences and aversions

## Children with an Education and Health Care Plan (EHCP)

If your child has specific speech and language targets on their EHCP we will provide intervention for your child in their Educational setting. We provide updated information for the Local Authority as part of the EHCP process.

For further information about Education and Health Care Plans in North Lincolnshire please follow the web link. <http://www.northlincslocaloffer.com/faqs/what-is-an-education-health-and-care-ehc-needs-assessment/>

## What will happen next?

If speech and language therapy intervention is required, therapy targets will be agreed with you and your child. Activities and strategies will be provided to be carried out at school and at home. These may be carried out as specific activities or as part of school routines and experiences.

Therapy sessions with either a Speech and Language Therapist or a Speech and Language Therapy Assistant may also be offered. These may involve:

- A one off demonstration session to deliver a pack of work for you or the school to carry out
- A workbook for home or school
- Weekly / fortnightly speech therapy sessions with you and your child. This will be for a set period of time with specific targets

## Your Child Will Be Discharged from Our Service When:

- Your child's speech and language skills are following normal developmental patterns or are within the normal range for their age
- Your child's speech and language skills are in line with their general development and learning
- Speech and language is not your child's current primary need e.g. if the referral is relating to behaviour, social communication, attention and listening

# Information for patients

- Advice and support have been given and you can continue with strategies and activities at home and / or school. We will advise you to refer your child again if they need further intervention
- Support strategies are already in place and there is no current evidence about how this is being implemented
- Your child does not yet have sufficient attention or self-awareness / motivation for therapy at this time
- Functional communication has been achieved
- You do not bring your child for their appointments

Please note: We do not offer a service for children with hearing impairment, where hearing is not aided to normal hearing thresholds.

## Contact Details for Further Information

Telephone: 01724 203755

[www.nlg.nhs.uk/services/childrens-speech-language/](http://www.nlg.nhs.uk/services/childrens-speech-language/)

## Any Comments, Compliments, Concerns or Complaints

If you have any other concerns please talk to your nurse, therapist or doctor. Our Patient Advice and Liaison Service (PALS) is available on 03033 306518 (Grimsby, Scunthorpe and Goole). You can also contact [nlg-tr.PALS@nhs.net](mailto:nlg-tr.PALS@nhs.net)

As a Trust we value equality of access to our information and services, therefore alternative formats are available on request at [nlg-tr.interpreters@nhs.net](mailto:nlg-tr.interpreters@nhs.net)

## Alternative Languages

All of our leaflets are available to view in different languages via Browsealoud on our website at [www.nlg.nhs.uk/patients/patient-leaflets/](http://www.nlg.nhs.uk/patients/patient-leaflets/)

Toate pliantele noastre sunt disponibile pentru a fi vizualizate în diferite limbi prin intermediul Browaloud pe site-ul nostru, la [www.nlg.nhs.uk/patients/patient-leaflets/](http://www.nlg.nhs.uk/patients/patient-leaflets/)

Wszystkie nasze ulotki są dostępne do przeglądania w różnych językach za pośrednictwem Browsealoud na naszej stronie internetowej [www.nlg.nhs.uk/patients/patient-leaflets/](http://www.nlg.nhs.uk/patients/patient-leaflets/)

Visus mūsų lankstinukus galite peržiūrėti įvairiomis kalbomis, naudodamiesi „Browsealoud“ mūsų svetainėje, adresu [www.nlg.nhs.uk/patients/patient-leaflets/](http://www.nlg.nhs.uk/patients/patient-leaflets/)

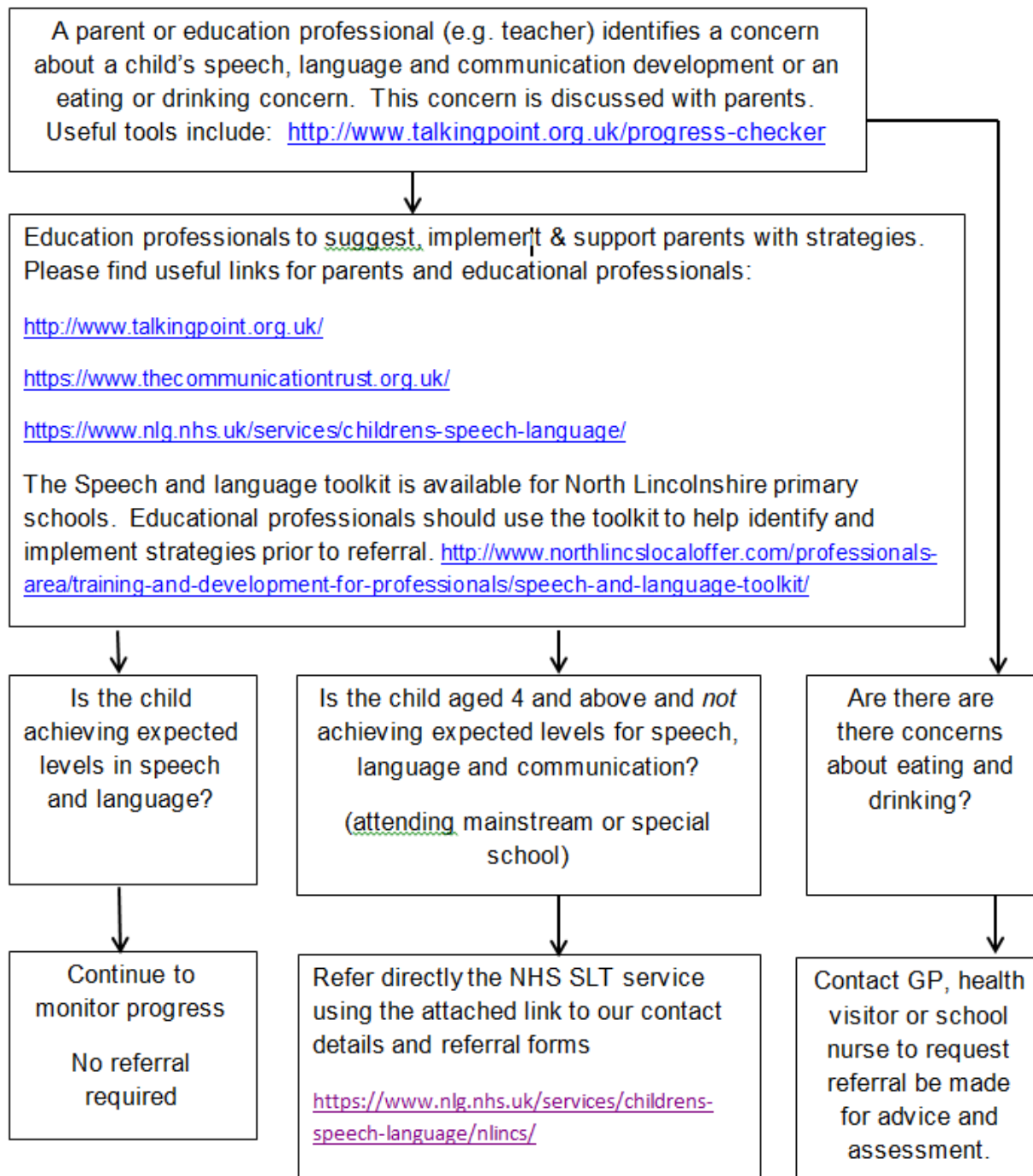
Vse naše zloženke so na voljo za ogled v različnih jezikih prek Browaloud na našem spletnem mestu [www.nlg.nhs.uk/patients/patient-leaflets/](http://www.nlg.nhs.uk/patients/patient-leaflets/)

# Information for patients

## Appendix 1:

### North Lincolnshire Referral Guidance for School Age Children

#### With Speech, Language and Communication Needs (SLCN) 4 years onwards



# Information for patients

---

**Date of Issue: September, 2020**

**Review Period: September, 2023**

**Author: Operational Lead Children & Young People Community & Therapy Services**

**IFP-1194**

